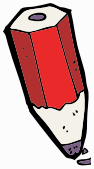
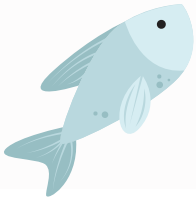


Kwa inu!



# Ntchito 1: Pezani chakudya:

Kodi mungapeze mitundu yonse ya zakudya zomwe mileme ingadye m'mawu ofufuzawa? Kumbukirani kufufuza chakumbuyo ndi chammbuyo, mbali ndi mmwamba ndi pansi, ngati mleme wanjala womwe umasakasaka chakudya.



## What bats eat

T	T	E	F	W	E	D	F	C	S	S	M	W	S
M	N	T	O	E	T	U	I	S	C	R	I	O	A
L	T	A	B	O	S	S	S	B	T	N	G	N	S
M	O	M	I	E	G	C	H	O	I	O	R	S	I
O	H	O	M	O	D	S	T	C	E	S	N	I	E
S	S	H	F	C	F	N	M	E	M	T	M	I	G
Q	S	L	R	T	L	A	F	S	S	B	A	F	E
U	H	U	B	T	O	B	O	W	D	F	S	Q	M
I	T	S	E	T	W	N	I	S	O	D	T	Q	R
T	O	R	E	U	E	E	S	G	O	G	I	E	F
O	M	E	T	F	R	C	F	O	L	H	U	T	S
S	C	O	L	S	S	T	F	R	B	F	R	S	O
T	N	C	E	F	N	A	S	F	E	E	F	C	N
E	O	U	S	N	E	R	M	T	M	S	O	N	U

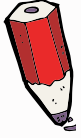
- INSECTS
- NECTAR
- FRUIT
- FISH
- FROGS
- MOSQUITOS
- BEETLES
- FLOWERS
- BLOOD
- MOTHS



Play this puzzle online at : <https://thewordsearch.com/puzzle/3421819/>



**Kwa inu!**



## Ntchito 2: Nthawi ya chakudya chamadzulo!

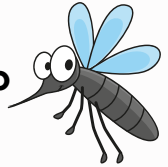


Fananizani mawonekedwe a mileme ndi mtundu wa chakudya chomwe amadya - pali zokuthandizani kuti muchite izi!

Ndili ndi maso akulu komanso mphuno yayitali



Wodya tizilombo



Ndili ndi lilime lalitali komanso ndimanunkhiza bwino



Wodya zipatso



Ndine wamng'ono ndipo ndimagwiritsa ntchito echolocation kuti ndipeze chakudya changa



Wodya timadzi tokoma

